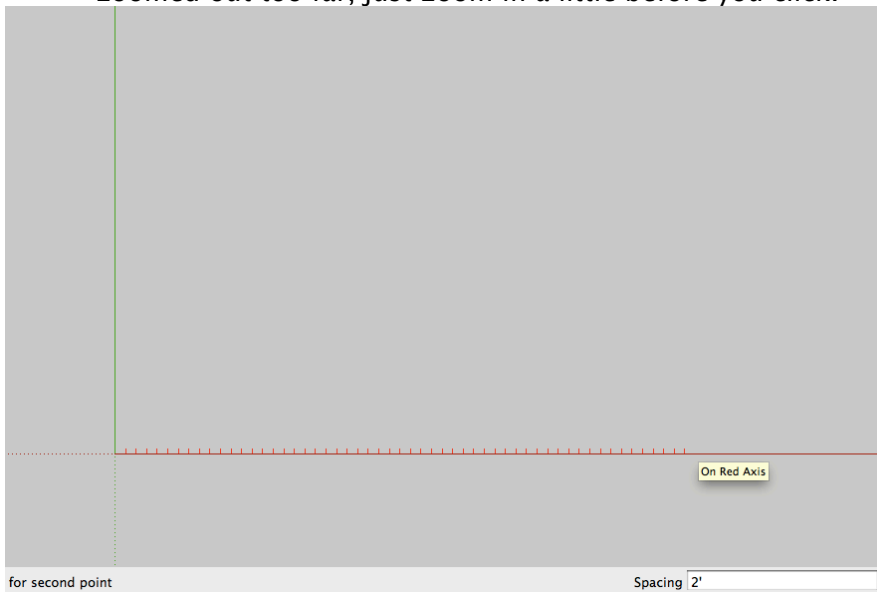


## Drawing Floor Plans in SketchUp

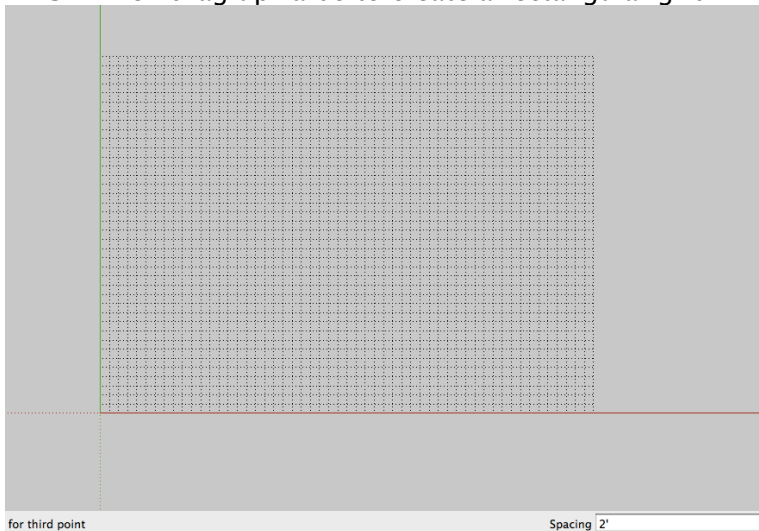
Today we will be starting the process of learning how to design homes with SketchUp. Eventually we will be starting new designs in the style of Frank Lloyd Wright, but today I want to revisit the Floor Plan design project we did earlier this year.

If you do not have a design from this project because you were not here at that point, do not worry. You will be able to follow along with this guideline anyway, but you will need to design your plan on the fly. See me if you have any questions.

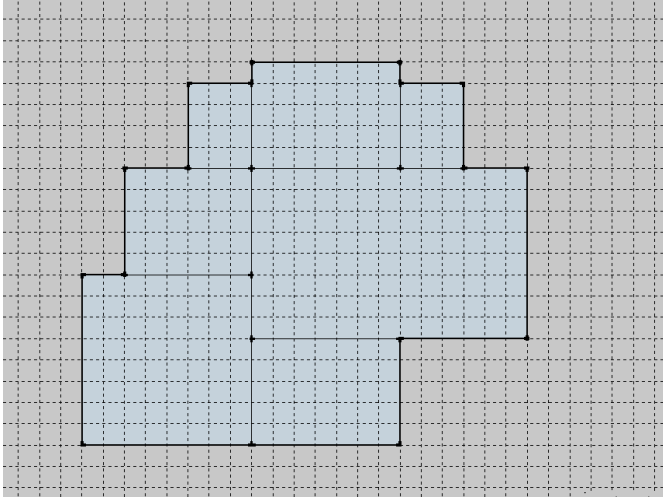
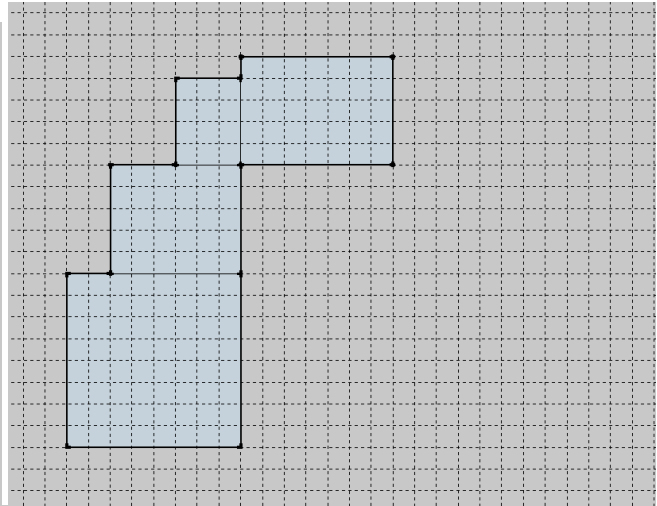
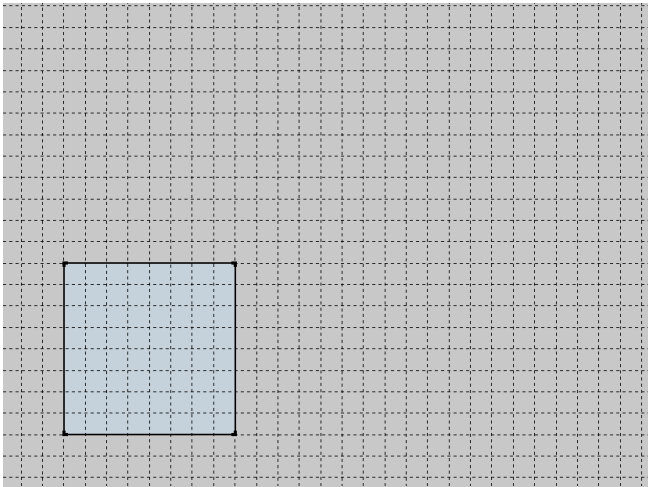
1. Open a new file and save it as "Firstname Lastname Floorplan 1.skp". To get started here we want to drop a Grid into SketchUp to make the drawing go a little faster. This way we will be able to count boxes and quickly see what lines up and what doesn't. We will be utilizing the Grid more often in this unit. **Go to the TOP view. Select Camera > Parallel Projection.**
2. By default the Grid spacing is set to 1', but we want the Grid lines to be spaced at 2'. So go to the TOOLS MENU > GRID to select the Grid tool, and before clicking type 2' and hit enter. This will change the Grid spacing to 2' in the lower right corner of the window. Now click at the corner of the red and green lines and drag to the right – you don't want to go too far. You should be able to see the tick marks for the grid lines- if you see a thick solid red line you are zoomed out too far, just zoom in a little before you click.



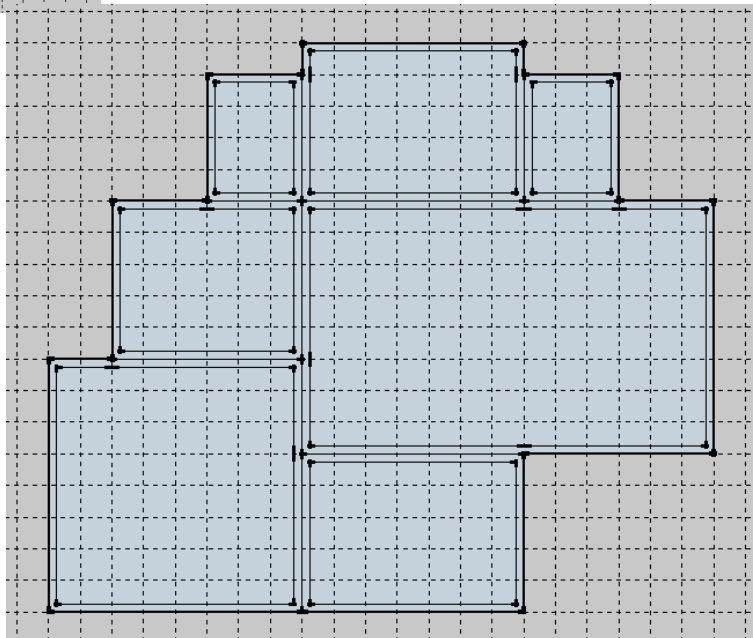
3. Then drag upwards to create a rectangular grid.



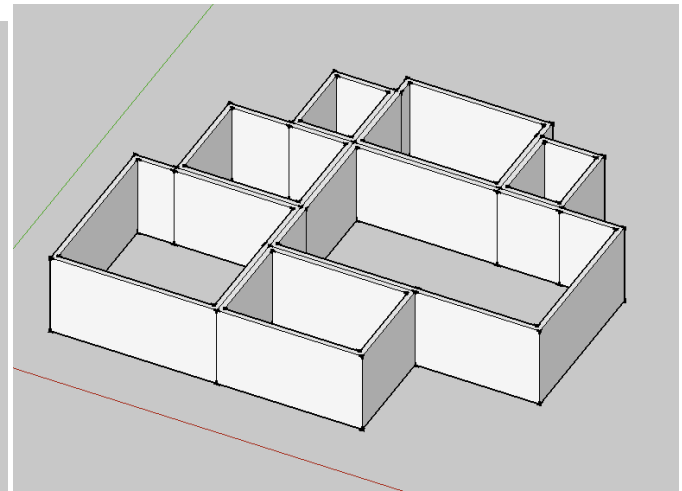
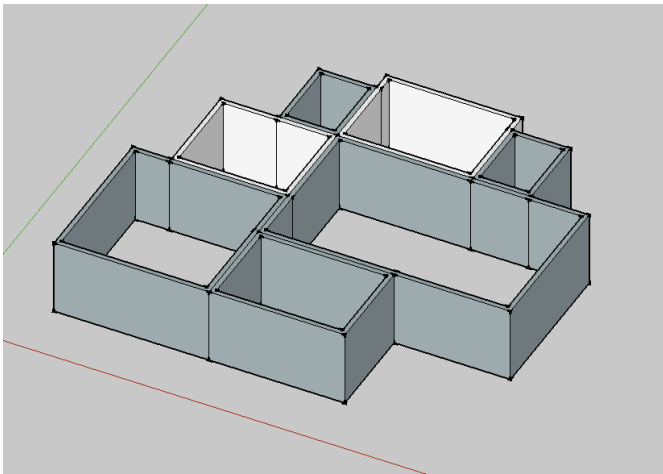
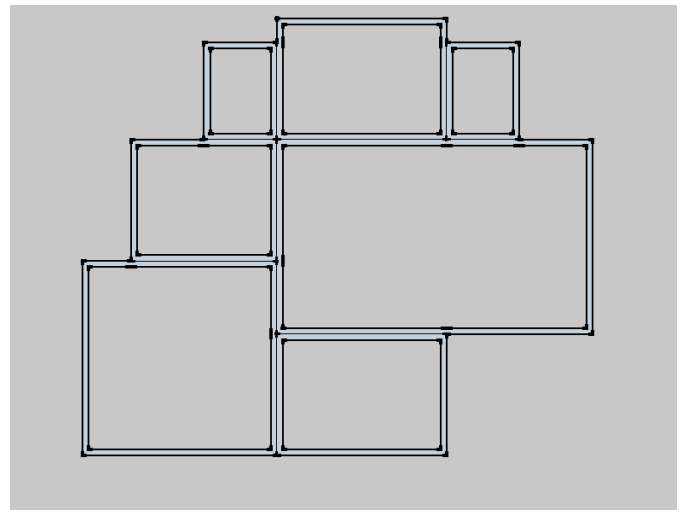
- Now examine your Floor Plan. You should have a number of rooms on there of varying sizes. If you remember we set each of the grid boxes on the graph paper to equal 2', just like the grid we made in SketchUp. You can simply start drawing the rooms from your floor plan onto the grid in SketchUp.



- If you don't like your original layout, you can revise it at this time. We are going to design a simple house based on these original designs. After you have your layout down, we want to create walls using the Offset tool. Offset each of the boxes inwards 6".



- Select the inner rectangles of each of these shapes and delete them to leave just the outlines of the walls. You can right click and HIDE the grid at this point if you like. When you want it back simply go to Edit > Unhide All.
- Now we want to pull those walls upward into space. Using Push/Pull, grab each of the rooms and pull it up 8'. This is a typical height for an average floor. We can always adjust this later. Also, different rooms may eventually have different heights for design reasons.



- YOU may have some white and some blue walls - this has to do with how SketchUp is interpreting the inside and outside of objects. Simple fix - select the entire structure and using the Paint Bucket paint it White.
- Now go into the top view again and using the 3D Text Tool, Label your rooms. To be continued...

